



Pukyong National University

Pukyong National University was established in 1996 through the merger of two national universities in Busan: the National Fisheries University of Busan and the Busan National University of Technology. This union marked the first instance of such a merger and has since served as a noteworthy example illustrating the evolution and future trajectory of Korean national universities. In 2024, we will celebrate the 100th anniversary of the legacy of innovation initiated by the original founding of the two predecessor universities in 1941.

2024 International Summer School

Time Spent at an institution overseas is a stimulating and exciting opportunity. International Summer School of Pukyong National University(PKNU-ISS) offers students opportunities to experience Korean culture and to understand the people better. International students will also have an opportunity to make new friends from all around the world as well as from PKNU. Aside from Korean culture, you will also be able to learn global current affairs by discussing and sharing ideas with both Korean students and other international students.



Contact Information

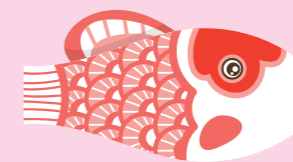
Name Hyeonjeong Kim(Ms.)
 Phone No. +82(0)51 629 6906
 Email oia-japan@pknu.ac.kr



Pukyong National University (PKNU)
 Welcomes You to



2024 INTERNATIONAL SUMMER SCHOOL



PKNU-ISS Program (Period II)



Schedule

Course	Credit(s)	Time	Language
Korean Language	2	Morning (9-11.50am)	Japanese
Korean-Japanese Society and Culture			
*Select One			
Global Culture(cultural activities)		Afternoon (2-5pm)	

*1 credit is equivalent to 15 hours of work.

*Changing course(s) is not available after the application deadline.

Cultural Activities and Field Trips

- Dado (Korean Tea Ceremony)
- Taekwondo (Korean Traditional Martial Arts)
- Samulnori(Korean traditional percussion quartet)
- Cooking Korean Food
- and many more



Important Dates

Application Deadline	May 1~June 28, 2024
Dormitory Check-in	August 8, 2024
Program	August 9 - 22, 2024
Dormitory Check-out	August 22, 2024

Dormitory

- Shared accommodation(twin room)
- * Each room is equipped with two beds, wardrobes, a refrigerator, and a private bathroom.
- Bedding(linen sheets, blanket and a pillow) provided
- Coin laundry
- No Cooking and Electric Appliances allowed

Program Fees

The program fees for the International Summer School are **US\$1,100**.

Registration	US\$200	Registration fee exemption (Partner universities)
Tuition	US\$900	
Activities & Field Trips		
Accommodation & Meals		

The fees cover:

- 10-day academic program(instruction, arrangements and administrative support)
- Transportation from Gimhae International Airport to Pukyong National University
- Accommodation in a twin room
- Meals(3 meals a day including weekend)
- Field trips and leisure activities

To be eligible to apply, you must:

- Be currently enrolled in an institution of higher education at the undergraduate level. All classes are taught and assessed in Japanese.

Required application documents:

1. Application form
2. Academic Transcript
3. Proof of Student Registration
4. A copy of the first two pages of the passport
5. A copy of medical[health] insurance coverage
6. TB(Tuberculosis) test result

Fees should be transferred to:

Pukyong National University

45 Yongso-ro, Nam-gu, Busan 48513 Republic of Korea

Bank	National Federation of Fisheries Cooperatives
Branch	PUKYONGDAE
Address	45 Yongso-ro, Nam-gu, Busan 608-737 Republic of Korea
Account No.	705-57-003124
Swift Code	NFFCKRSE

NOTICE

- **Must pay during the Payment Period: Monday, July 1 - Friday, July 5, 2024**
- Make sure program fees are transferred under the name of the participant.
- Students are **responsible for paying a remittance charge**.
(On the certificate of tuition payment, it should be noticed correctly of final amount.) →
If you don't pay in full, you have to pay extra payment when you come to Korea.
- If payment is made later July 5, the application will not be accepted.
- Please make sure the fees are transferred **under the name of the participant**.

Travel Insurance

Travel insurance is not covered by the program fees. The purchase of travel insurance prior to departure to Korea that is valid for the entire duration of travel is the responsibility of each participant and is strongly recommended.

Cancellation Policy

In the event of cancellation, the participants must notify the Office of International Affairs(OIA) in writing.

- For any cancellation before the program starts, a full payment will be refunded but a transfer charge will be deducted from your payment.

Visa requirement

It is the participant's own responsibility to check with their country and embassy if visa is required to enter Korea. Participants who need a visa will have to make their own arrangements in applying for the visa prior to their arrival here in Korea. Once we received the payment, we will gladly send you a Letter of Acceptance(LoA).

Course Description



Korean Language

This is an elementary Korean language course designed for those who have no prior (or very limited) knowledge in Korean. The course goal is to provide a basic foundation that will enable students to acquire and develop language skills in listening, speaking, reading, and writing in Korean. Throughout the process of learning these skills, emphasis will be on the student's ability to perform in real-life situations through task-based practice.

Korean-Japanese Society and Culture

This is an introductory course designed to introduce students to important elements of Korean and Japanese culture. This course aims to identify a unique pattern of cultural construction of both countries in the major aspects of Korea and Japan's pre-modern and modern society and life. Various multimedia materials will be used in conjunction with lectures and class discussions to promote students' understanding of the basics of Korean and Japanese culture.