

The Future Vision of Kanazawa University



Version Up 2024

Kokorozashi

Sep 30th, 2024

Introduction

President

WADA Takashi



The Noto Peninsula Earthquake that occurred on January 1, 2024, and the Noto heavy rain that occurred in September 2024 caused extensive damage in various areas, especially in the Noto Peninsula. We would like to express our deepest sympathies to all those affected by these disasters. The affected communities are still far from returning to their normal lives, but we will continue to make every effort toward the earliest possible restoration, recovery, and reconstruction of the region.

In the immediate aftermath, Kanazawa University mobilized all of its capabilities to respond to the initial stages of these disasters. At the end of January, we established the Noto Resilience and Revitalization Center, and we built systems to respond to the earthquake recovery with a view to achieving a medium- to long-term recovery. Under an unwavering philosophy and *Kokorozashi* (aspiration) to “contribute to society through ‘Future-oriented Intelligence’ based on an All Kanazawa University approach”, we aim to bring together our Future-oriented Intelligence, create new value in Noto, demonstrate the society of the future, and disseminate this vision to the world. Through these efforts, we will continue to make efforts as an academic organization to assist the earthquake recovery.

Formulating The Future Vision of Kanazawa University – “*Kokorozashi*”

Kanazawa University was founded in 1862 as Kaga Domain's Hikoso Vaccination Center. We are a comprehensive university that has inherited the history and traditions of our predecessor schools, including the Fourth Higher School, Ishikawa Normal School, Ishikawa Youth Normal School, Kanazawa Higher Normal School, Kanazawa Medical College, and Kanazawa Technical College.

After I was appointed Kanazawa University President in April 2022, I formulated an unwavering vision for the future of Kanazawa University - *Kokorozashi*. This built on the history established by our predecessors and our basic philosophy of being “a research university dedicated to education, while opening up its doors to both local and global society”, as stated in the Charter of Kanazawa University. I presented *Kokorozashi* both within the university and the society in May of the same year.

Our goal is to contribute to society through “Future-oriented Intelligence”, which means exploring and overcoming future issues, as well as solving current issues, by utilizing two perspectives – local and global.

With this in mind, our research, education, and administrative aspirations are as follows:
Research: Enhance ourselves as global research bases through the development of innovative, world-class research.
Education: Produce core leaders of international society as “Kanazawa University Graduates”
Administration: Realize sustainable and autonomous administration that creates a virtuous cycle of people, knowledge, and society”.

These three aspirations are closely related to each other. Research and education form a positive loop with a mutually positive impact. At the same time, this is supported by solid administration and management. The vision of Kanazawa University is to integrate these three functions and contribute to society through “Future Oriented Intelligence”.

Building on our basic philosophy, our vision for the future – *Kokorozashi* – and aspirations for research, education, and administration have led us to develop missions for what Kanazawa University should aim for at this stage, and individual action plans for what Kanazawa University needs to do with urgency.

Measures Initiatives since Formulating the Future Vision of Kanazawa University "*Kokorozashi*", and Revisions.

It has been about two years since we presented the future vision of Kanazawa University "*Kokorozashi*". We have decided to review on our initiatives and revise the *Kokorozashi* for the next generation. To date, We have been striving to realize *Kokorozashi* with an all Kanazawa University approach, in which students, faculty, and staff transcended their respective positions and worked together with mutual respect and collaboration. Their efforts have been successful in research, education, and administration.

In terms of research, under the leadership of the Interfaculty Institute for Frontier Science, we are implementing various initiatives to accelerate our "contributions to society through Future-oriented Intelligence" through basic research, applied research, and social empirical research. In April 2023, we established the Experimental Research Center for Envisioning the Future, which will serve as the core of our demonstration research. Kanazawa University was also selected by the Ministry of Education, Culture, Sports, Science and Technology (MEXT) for the "Program for Forming Japan's Peak Research Universities (J-PEAKS)" with the aim of forming world-class bases for discontinuous innovation through the fusion of the humanities, sciences, and medicine to lead social change in this unpredictable era. Vision Incubate Co., Ltd., a venture capital company in which we have a 100% stake, began operations in August 2023. we will further contribute to society by improving our research capabilities as a global research university and implementing them in society.

In terms of education, we are promoting an integrated education and support system from elementary education to graduate school under the Interfaculty Institute for Future Education. Selected in 2023 for the "Science and Technology Challenge Program for Next Generation" (elementary, junior high, and high school programs), we offer long-term, seamless training programs for elementary, junior high, high school, and technical college students. In addition, since 2024, we have greatly expanded the admissions capacity for our bachelor's degree programs in the fields of digital technology and tourism sciences. In academic year 2025, we decided to establish a new graduate school connected the College of Transdisciplinary Sciences for Innovation. We are very much looking forward to welcoming more highly motivated students who have decided to enter graduate school and study on doctoral programs. To this end, we will also promote the initiatives of the Strategic Project for Development of Doctoral Students and Research Promotion (HaKaSe+). At the same time, we also offer field-and objective-tailored reskilling programs for working people seeking to acquire new skills and knowledge and improve their abilities so that we can develop the human resources that society needs.

In terms of administration, in November 2022, Kanazawa University was selected for the "National University Management Reform Promotion Project" by MEXT. Through these efforts, our University has built a foundation for investing in people and strongly promoting projects toward its ideal of being a global research university with multiple world-class research bases. In addition, under the coordination of the Hokuriku Economic Federation, we will further enhance the "HOKURIKU Open Platform for Co-creating the Future", which is jointly operated by four national universities in the Hokuriku region, including our university. Through this organization, we will accelerate open innovation through industry-academia-government collaboration.

In May 2023, the G7 Education Ministers' Meeting Excursion in Toyama and Kanazawa was held at our Kakuma Campus. Ministers from G7 countries and representatives of international organizations visited our university and talked directly with students and faculty. It was a very valuable opportunity. The acceptance of Japanese students abroad and students from abroad studying in Japan, which had previously been affected by the COVID-19 disaster, is also recovering and expanding. Our University continues to make efforts as a research university, while paying close attention to global developments.

These achievements will become stepping stones for Kanazawa University to achieve our aspirations. Under our revised *Kokorozashi*, we present a timeline for the next two years toward the ideal Kanazawa University. All members of our organization will work together based on an All Kanazawa University approach to reaffirm our goal of "contributing to society through 'Future Oriented Intelligence'". As a research university, we will continue to push forward with education and research, and contribute to the creation of future value.

We sincerely hope for your understanding, cooperation and encouragement in this endeavor.

**Overall
Structure
/
Summary**

The Future Vision of Kanazawa University – “*Kokorozashi*”

Contributing to Society through “Future Oriented Intelligence”, Built on an “All Kanazawa University” Approach

We have set out our vision for the future of Kanazawa University, built on the basic philosophy stated in the Charter of Kanazawa University.

Our aspirations

Research

Enhance ourselves as global research bases through the development of innovative, world-class research

Education

Produce core leaders of international society, as “Kanazawa University Graduates”

Administration

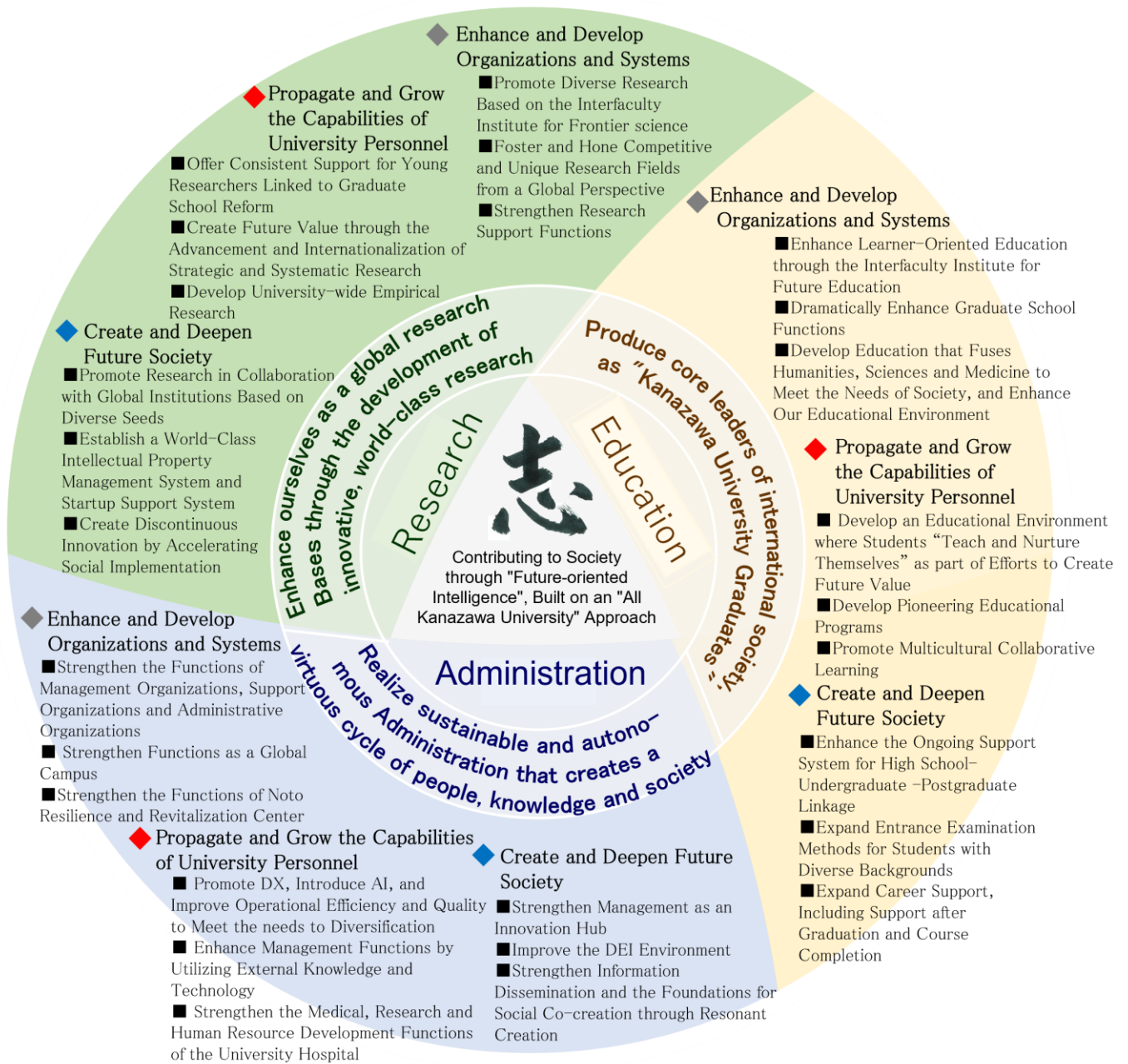
Realize sustainable and autonomous administration that creates a virtuous cycle of people, knowledge and society

As part of our efforts to contribute to society through “future-oriented intelligence”, as expressed in *Kokorozashi*, we have set out aspirations for research, education, and administration as a comprehensive university covering diverse fields, including humanities and social sciences, as well as natural sciences and life sciences.

As we strive toward these aspirations, we have set ourselves missions for what Kanazawa University needs to do urgently by considering the establishment and development of organizations and systems, the propagation and expansion of the power possessed by university personnel (students and faculty), and creation and deepening of harmony with society.

This has led to the development of 27 missions, which are interrelated, through which we aim to realize *Kokorozashi*.

We will strive to realize our aspirations and missions for research, education, and administration, with a view to achieving our medium-term targets and medium-term plan. We will develop action plans for each mission and set out a timetable for the next two years, working swiftly and boldly to reform and strengthen the functions of the university.



■ Research - Enhance Ourselves as Global Research Bases through the Development of Innovative, World-class Research

1 Enhance and Develop Organizations and Systems

- Mission (1) Promote Diverse Research Based on the Interfaculty Institute for Frontier Science
- Mission (2) Foster and Hone Competitive and Unique Research Fields from a Global Perspective
- Mission (3) Strengthen Research Support Functions

2 Propagate and Grow the Capabilities of University Personnel

- Mission (1) Offer Consistent Support for Young Researchers linked to Graduate School Reform
- Mission (2) Create "Future Value" through the Advancement and Internationalization of Strategic and Systematic Research
- Mission (3) Develop University-wide Empirical Research

3 Create and Deepen Future Society

- Mission (1) Promote Research in Collaboration with Global Institutions Based on Diverse Seeds
- Mission (2) Establish a World-Class Intellectual Property Management System and Startup Support System
- Mission (3) Create Discontinuous Innovation by Accelerating Social Implementation

■ Education - Produce Core Leaders of International Society, as "Kanazawa University Graduates"

1 Enhance and Develop Organizations and Systems

- Mission (1) Enhance Learner-Oriented Education through the Interfaculty Institute for Future Education
- Mission (2) Dramatically Enhance Graduate School Functions
- Mission (3) Develop Education that fuses Humanities, Sciences and Medicine to Meet the Needs of Society, and Enhance Our Educational Environment

2 Propagate and Grow the Capabilities of University Personnel

- Mission (1) Develop an Educational Environment where Students "Teach and Nurture Themselves" as part of Efforts to Create Future Value
- Mission (2) Develop Pioneering Educational Programs
- Mission (3) Promote Multicultural Collaborative Learning

3 Create and Deepen Future Society

- Mission (1) Enhance the Ongoing Support System for High School-Undergraduate-postgraduate Linkage
- Mission (2) Expand Entrance Examination Methods for Students with Diverse Backgrounds
- Mission (3) Expand Career Support, Including Support after Graduation and Course Completion

■ Administration - Realize Sustainable and Autonomous Administration that Creates a Virtuous Cycle of People, Knowledge and Society

1 Enhance and Develop Organizations and Systems

- Mission (1) Strengthen the Functions of Management Organizations, Support Organizations and Administrative Organizations
- Mission (2) Strengthen Functions as a Global Campus
- Mission (3) Strengthen the Functions of the Noto Resilience and Revitalization Center

2 Propagate and Grow the Capabilities of University Personnel

- Mission (1) Promote Digital Transformation (DX), Introduce AI, and Improve Operational Efficiency and Quality to Meet the Needs of Diversification
- Mission (2) Enhance Management Functions by Utilizing External Knowledge and Technology
- Mission (3) Strengthen the Medical, Research, and HR Development Functions of the University Hospital

3 Create and Deepen Future Society

- Mission (1) Strengthen Management as an Innovation Hub
- Mission (2) Improve the DEI Environment
- Mission (3) Strengthen Information Dissemination and the Foundations for Social Co-Creation through Resonant Creation

Research

Enhance Ourselves as Global Research Bases through the Development of Innovative, World-class Research

Kanazawa University is fostering and honing globally competitive and unique research fields. We are promoting the formation of centers that will lead efforts to strengthen Japan's research capabilities, including: the World Premier International Research Center Initiative of the Ministry of Education, Culture, Sports, Science and Technology (WPI); the Nano Life Science Institute; and the Program for Forming Japan's Peak Research Universities (J-PEAKS).

Based on our history and a pursuit of truth we have cultivated over many years, Kanazawa University will seamlessly create intellectual value by promoting basic research, applied research, and interdisciplinary research through close collaboration between the humanities, sciences, and medicine as a comprehensive university. We will achieve this through forecasting and backcasting, with an eye on current and future social issues, while traveling back and forth between our local region and the world. In addition, through domestic and international industry-academia-government collaboration and diverse seeds, we will develop empirical research that leads to solutions to social issues and returns the results of our research to society through social implementation. Through these efforts, we will form a world-class center for discontinuous innovation through a fusion of humanities, sciences, and medicine, and contribute to society through Future Oriented Intelligence. Furthermore, centered on the Noto Resilience and Revitalization Center, the University will use its knowledge to strongly support Build Back Better in the Noto Peninsula, and build links to the future from the occupations, landscapes, cultures, and biodiversity that are rooted in Noto's satoyama and satoumi.

In order to realize *Kokorozashi*, we have set forth nine missions for our research, based on three perspectives. In addition, our action plans we will clarify what we need to do with urgency so we may work to reform and strengthen the functions of our university.

1 Enhance and Develop Organizations and Systems

In order to foster world-class research and enhance our global research bases, we will develop our research capabilities by establishing organizations to lead research and by strengthening our research support systems.

Mission (1) Promote Diverse Research Based on the Interfaculty Institute for Frontier Science

[Actions] In order to utilize basic research and core technologies in a wide range of fields and to further promote research that fuses humanities, sciences, and medicine, we will further strengthen and expand the Interfaculty Institute for Frontier Science, which is our university-wide research command organization. We will also promote and organize research that contributes to disaster recovery.

Mission (2) Foster and Hone Competitive and Unique Research Fields from a Global Perspective

[Actions] We will offer strategic and organizational support to form a world-leading WPI-class base in research fields where we possess competitive advantages and unique characteristics.

Mission (3) Strengthen Research Support Functions

[Actions] In order to strengthen our research support functions, we will foster research support personnel, such as University Research Administrators (URA) and Technical Staff, and provide research support that takes advantage of their high levels of expertise. We will enhance our research infrastructure strategically and efficiently by strengthening core facility functions.

2 Propagate and Grow the Capabilities of University Personnel

We will strengthen our research capabilities by improving our university research environment and fostering ambitious research personnel in order to develop world-class research and expand our world-leading research bases.

Mission (1) Offer Consistent Support for Young Researchers linked to Graduate School Reform

[Actions] We will support the young researchers who will lead the next generation in order to create new intellectual value to overcome future challenges. Based on support for doctoral research personnel and the Support Package for Young Researchers, we will foster outstanding doctoral human resources who will lead the society of the future.

Mission (2) Create "Future Value" through the Advancement and Internationalization of Strategic and Systematic Research

[Action] We will develop initiatives that contribute to strengthening the University's research capabilities from a medium- to long-term perspective, including the Strategic Research Promotion Program.
Through close collaboration between the humanities, sciences, and medicine, we will promote basic, applied, and interdisciplinary research in a wide range of fields and produce world-class research results in a seamless manner.

Mission (3) Develop University-Wide Empirical Research

[Action] In order to create innovation that leads to solutions to global issues and social change, we will co-create and collaborate with diverse stakeholders to develop the empirical research environment on campus.
With the Experimental Research Center for Envisioning the Future as a base, we will visualize the targeted society of the future as a showcase, and vigorously promote empirical research with an eye toward exit strategies.

3 Create and Deepen Future Society

In order to develop world-class research and expand our world-leading research base, we will strengthen our research capabilities by expanding the development of research through collaboration with society and implementing research outcomes in society.

Mission (1) Promote Research in Collaboration with Global Institutions Based on Diverse Seeds

[Actions] We will systematically promote Industry-Academia-Government-Finance Collaboration to generate research outcomes and return them to society. We will develop projects related to social co-creation in collaboration with domestic and foreign companies and local governments, and international research at our Joint Usage/Collaborative Research Centers.

Mission (2) Establish a World-class Intellectual Property Management System and Startup Support System

[Actions] Through collaboration with the Japan Patent Office and other efforts, we will promote an international patent strategy that integrates and strengthens the entire process from the researcher training stage to the initial stages of basic research and through to commercialization.
We will establish a startup support system centered on the Hokuriku region through Industry-Academia-Government-Finance Collaboration to significantly transform Kanazawa into an advanced startup region.

Mission (3) Create Discontinuous Innovation by Accelerating Social Implementation

[Actions] We will utilize various platforms such as the HOKURIKU Open Platform for Co-creating the Future, in collaboration with the Experimental Research Center for Envisioning the Future, the Frontier Science and Social Co-creation Initiative, and companies, etc., in order to accelerate the social implementation of research results.

Education

Produce Core Leaders of International Society, as “Kanazawa University Graduates”

Rapid advances in science and technology have brought humanity to a major turning point in the nature of our knowledge and skills. There is a need for human resources who can flexibly incorporate new knowledge, such as artificial intelligence technology, to lead the way in solving modern day issues, including unending conflict and recovery from natural disasters, as well as to explore and overcome future challenges.

Kanazawa University has set forth the Kanazawa University “Global” Standard (KUGS) program to offer an image of human resources who can actively fulfill their missions in international and local communities, become core leaders in a knowledge-based society, and always face up to difficulties in the field without fear. Inheriting and developing the traditions and culture of our predecessor school, Kanazawa University aims to produce “Kanazawa University Graduates” equipped with the KUGS.

Accordingly, we have established nine educational missions, utilizing three perspectives

1 Enhance and Develop Organizations and Systems

In order to develop students as above, we will strengthen our educational functions through the establishment of a system to comprehensively promote educational reforms and the reorganization of educational systems.

Mission (1) Enhance Learner-Oriented Education through the Interfaculty Institute for Future Education

[Actions] We will promote educational reform across the University, led by the Interfaculty Institute for Future Education and under the direct control of the President, in order to promote dramatic advances in educational reform. We will consolidate and visualize various on-campus educational resources and provide various types of learning to society by placing “learner-centered” education, from elementary school through to graduate education, at the center of educational reforms.

Mission (2) Dramatically Enhance Graduate School Functions

[Actions] With the aim of producing for society even greater numbers of Intellectual Professionals who can contribute to regional revitalization, we will implement reorganizations in relation to the training of the arts and social sciences, natural sciences, basic medicine and pharmaceutical researchers. We will expand the admission capacity of graduate schools, mainly for doctoral programs, in order to foster human resources with transferable skills and produce them widely in society.

Mission (3) Develop Education that Fuses Humanities and Sciences and Medicine to Meet the Needs of Society, and Enhance Our Educational Environment

[Actions] Develop an interdisciplinary education that fuses the humanities, sciences, and medicine from bachelor’s programs through to the doctoral programs of graduate schools. Kanazawa University will respond to the needs of society by enhancing the environment in which students from each academic field can study alongside students from other academic areas, while fully developing their own academic interests.

2 Propagate and Grow the Capabilities of University Personnel

We will further strengthen our educational capabilities by developing an educational environment that fosters learning and knowledge.

Mission (1) Develop an Educational Environment Where Students “Teach and Nurture Themselves” as part of Efforts to Create Future Value

[Action] We will enhance digital content and teaching materials that allow students to learn independently according to their own curiosity and the needs of each era. Furthermore, making skillful use of advanced new technologies such as xR technology and generative AI, Kanazawa University will transform the quality of education in order to nurture students’ ability to learn, think, and act independently throughout their lives and support them in doing so.

Mission (2) Develop Pioneering Educational Programs

[Actions] We will develop educational programs, such as the STEAM Human Resource Development Program, in order to foster human resources who can play active roles, even in a rapidly changing society. We will also develop and deploy educational programs in Noto region and foster the ability to contribute to the reconstruction of Noto and other disaster-stricken regions.

Mission (3) Promote Multicultural Collaborative Learning

[Actions] In order to nurture human resources who can accept diverse values and play active roles in international and local communities, we will provide opportunities for exchange where students with diverse backgrounds can learn and grow together in Kanazawa, an academic city with rich traditional culture and arts. We will visualize and disseminate the results to our overseas partner universities.

3 Create and Deepen Future Society

We will provide consistent support to a wide range of students from enrollment through to graduation and completion. We will strengthen harmony between students and the university, between students, and between students and society.

Mission (1) Enhance the Ongoing Support Systems for High school-Undergraduate-Postgraduate Linkage

[Actions] We will provide consistent education and student support, from high school through to undergraduate courses and graduate schools, including fostering links between high schools and undergraduate courses.

Mission (2) Expand Entrance Examination Methods for Students with Diverse Backgrounds

[Actions] We will implement entrance examination reforms to increase the acceptance of students from diverse backgrounds, including foreign students and working adults, and publicize the results to society.

Mission (3) Expand Career Support, Including Support After Graduation and Course Completion

[Actions] In addition to enhancing students’ specialized knowledge, we will strengthen cooperation with society to foster the knowledge, wisdom, and skills needed in a renewed society. We will expand our reskilling program to allow participants to acquire new skills and knowledge and to improve competencies.

Realize Sustainable and Autonomous Administration that Creates a Virtuous Cycle of People, Knowledge and Society

In order to meet the expectations of society and fulfill their roles, universities need to possess sustainable competitiveness and generate high added value. It is essential that we make the most of our strengths and characteristics to transform ourselves into an organization that can contribute fully to academic progress and the creation of innovation.

Under the leadership of the President, faculty and staff will work together to promote pioneering and strategic reforms with the aim of becoming a comprehensive knowledge innovation hub that generates social impact. We also aim to create and internationalize the society of the future through sustainable university management in which funds, people, and knowledge are virtuously circulated through engagement with diverse stakeholders, including local and international communities.

Thus, we have advanced nine missions for administration, developed from three perspectives.

1 Enhance and Develop Organizations and Systems

To achieve sustainable and autonomous management, we will strengthen our structure by reorganizing the organization and expanding campus functions in response to the progress of university reform.

Mission (1) Strengthen the Functions of Management Organizations, Support Organizations and Administrative Organizations

[Actions] We will promote effective and efficient management, carried out by personnel with diverse expertise. We will strengthen our support organizations and administrative organizations to allow a flexible response according to objectives and project needs.

Mission (2) Strengthen Functions as a Global Campus

[Actions] We will further promote the internationalization of our campuses and create an environment that will continue to generate new innovation. We will give back to the community by strengthening the research/education and medical treatment functions of each campus by upgrading our facilities and equipment, strengthening our management systems, and introducing new mechanisms.

Mission (3) Strengthen the Functions of the Noto Resilience and Revitalization Center

[Actions] Led by the Noto Resilience and Revitalization Center, we will promote the revitalization, reconstruction, and continued development of education, medicine, culture, and industry in Noto through collaboration and co-creation with the community, local government, and companies, and a fusion of humanities, sciences, and medicine. Furthermore, we will realize the Noto satellite campus concept and research institute concept in cooperation with domestic and overseas institutions in order to strengthen our international functions.

2 Propagate and Grow the Capabilities of University Personnel

We will promote work style reforms, including the utilization of external knowledge, in order to improve the operational efficiency of staff and improve the quality of their work.

Mission (1) Promote Digital Transformation (DX), Introduce AI, and Improve Operational Efficiency and Quality to Meet the Needs of Diversification

[Actions] We will strengthen the development of staff responsible for DX promotion, including streamlining and automating operations using AI. This will improve our ICT-led operations and enhance our IR functions using accumulated data.

Mission (2) Enhance Management Functions by Utilizing External Knowledge and Technology

[Actions] While promoting the recruitment and training of job-type staff with knowledge and experience and reforming our personnel and salary systems, we will establish systems to encourage diversity of human resources at our organization. We will promote fundamental reforms related to administration, including the acquisition of more external funding. We will share external knowledge and technology within the University to improve the management skills of staff.

Mission (3) Strengthen the Medical, Research, and Human Resource Development Functions of the University Hospital

[Actions] To support future medicine and become a medical institution that is loved by the community and shines globally, we will promote research that combine the humanities, sciences, and medicine. We will strengthen our education and training functions, with team medicine based on multidisciplinary cooperation at the core.

3 Create and Deepen Future Society

We will strengthen our cooperative structure for establishing circulation with society.

Mission (1) Strengthen Management as an Innovation Hub

[Actions] As the highest seat of learning and an innovation hub, we will establish and develop an innovation ecosystem in which diverse human resources, knowledge, and funds circulate locally and globally, centered on the knowledge created at Kanazawa University.

Mission (2) Improve the DEI Environment

[Actions] The Institute for Promotion of Diversity and Inclusion will play a central role in creating a Diversity Equity and Inclusion (DEI) environment in which all members of our organization can set lofty goals, maximize their abilities, and play active roles internationally.

Mission (3) Strengthen Information Dissemination and the Foundations for Social Co-Creation through Resonant Creation

[Actions] We will conduct ceaseless improvements to our branding and public relations strategy, reflecting our administrative reforms, and conduct effective public relations in line with this strategy. We will provide attractive content through a variety of media to communicate the results and activities of the University's research, education, and social contributions, etc. in an easier-to-understand manner.

Through the HOKURIKU Open Platform for Co-creating the Future, we will collaborate with various stakeholders in the Hokuriku region to expand co-creation projects aimed at regional revitalization. We will also strengthen the industry-academia-government-finance collaboration system that contributes to the sustainable development of the Noto region, centered on the Noto Resilience and Revitalization Center.



Working to Build Back Better

Contribution to the development of culturally rich communities and towns that are resistant to earthquakes and other disasters, safe, secure, and comfortable for everyone to live in, as well as to the development of human resources by bringing together the wisdom of Kanazawa University

The Noto Peninsula Earthquake that occurred on January 1, 2024, and the Noto heavy rain that occurred in September 2024 caused extensive damage in various areas, especially in the Noto Peninsula. The restoration of people's livelihoods is an urgent task. As we work to assist in the recovery, Kanazawa University will continue striving to “Build Back Better” in order to realize better livelihoods and ways of life, while inheriting Noto's beautiful satoyama and satoumi and rich culture, and taking into account pre-existing challenges, such as population decline and aging society.

Kanazawa University has a spirit of weaving innovation into its history and the traditions inherited from its predecessor schools, such as the former the Fourth Higher School. This spirit has been passed down to the present. Since 2022, under our basic philosophy as “a research university dedicated to education, while opening up its doors to both local and global society”, as stated in the Charter of Kanazawa University, Kanazawa University has been committed to education and research with an unwavering future vision of “**contributing to society through Future-oriented Intelligence**”, which means **exploring and overcoming future issues as well as solving current issues, by utilizing two perspectives-local and global**. Witnessing the earthquake disaster, we realized again that disaster recovery requires a broader perspective of all knowledge and a comprehensive utilization of it. This is precisely the contribution to society through Future-oriented Intelligence that is being asked. With this in mind, on January 30, we established the Noto Resilience and Revitalization Center. Our aim is to strongly promote the restoration, revitalization, and continuous development of Noto's education, medicine, culture, and industry from a medium- to long-term perspective, while building on the history and pursuit of truth that we have cultivated over the years. With the Center at the core of our efforts, we will bring together the wisdom of Kanazawa University as a comprehensive university to overcome current and future issues and build a creative future for Noto. We will do this by developing empirical research based on reconstruction, producing human resources who will contribute to reconstruction, and fusing humanities, science, and medicine. We will also look outside of our region and disseminate to the entire world a new vision of society and the knowledge needed to overcome disasters that will enable us to cope with the earthquakes and disasters of the future, both domestically and overseas.

We are committed to creating future value through Future-oriented Intelligence and Build Back Better in Noto, with our eyes on both local and global.

Working to Build Back Better in Noto

We are committed to making the following efforts for recovery and reconstruction from the twin disasters. These efforts are set forth as missions and actions to be taken in research, education, and administration, respectively, under our *Kokorozashi* vision for the future.

- As we work to Build Back Better, we will bring together the knowledge and wisdom of the University to promote research that will lead to the development of medicine, communities, and livelihoods on our peninsula. Furthermore, together with our local communities, we will promote empirical and basic research with Noto as a field, and contribute to human resources and community development in Noto while staying close to the community.

Mission Promote Diverse Research Centered on the Interfaculty Institute for Frontier Science [Research]

[Actions] We will promote and organize research that contributes to disaster recovery.

- We will aim to develop human resources who can contribute to recovery and reconstruction efforts by learning about the social and regional characteristics of Noto, acquiring scientific knowledge on disaster prevention and disaster mitigation, and applying their own areas of expertise.

Mission Develop Pioneering Educational Programs [Education]

[Actions] We will develop educational programs that build the ability to contribute to the reconstruction of Noto and other disaster-stricken regions.

- We will do our utmost to collaborate and co-create with local communities, local governments, and businesses, led by the Noto Resilience and Revitalization Center, to achieve not only recovery and reconstruction, but also the revival and sustainable development of education, medicine, culture, and industry.

Mission Strengthen the Functions of the Noto Resilience and Revitalization Center [Administration]

[Actions] Led by the Noto Resilience and Revitalization Center, we will promote the revitalization, reconstruction, and continued development of education, medicine, culture, and industry in Noto through collaboration and co-creation with the community, local government, and companies, and a fusion of humanities, sciences, and medicine. Furthermore, we will realize the Noto satellite campus concept and research institute concept in cooperation with domestic and overseas institutions.



KU Strategy Office, Kanazawa University

Kakuma-machi, Kanazawa, 920-1192

<https://www.kanazawa-u.ac.jp>